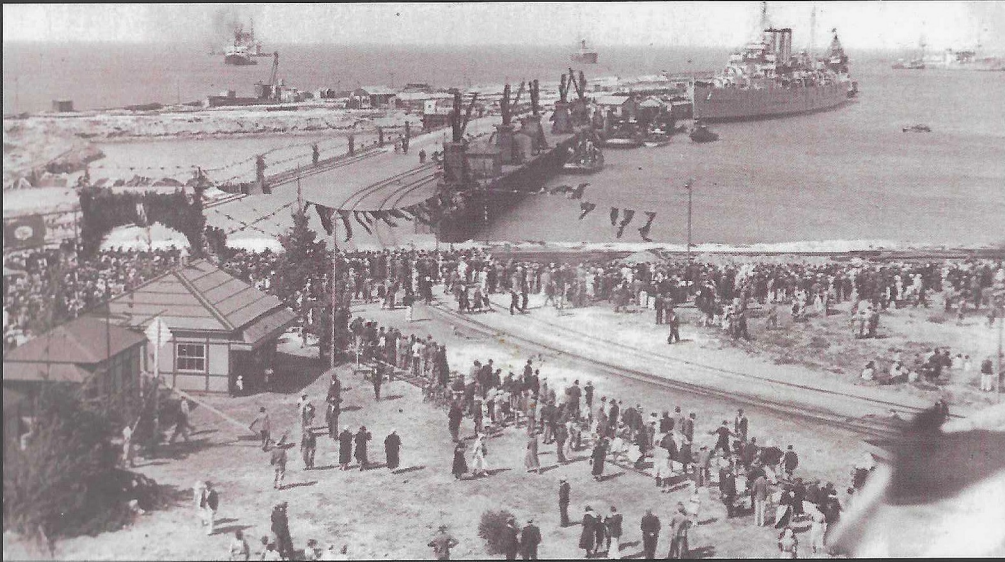


Port Elizabeth of Yore

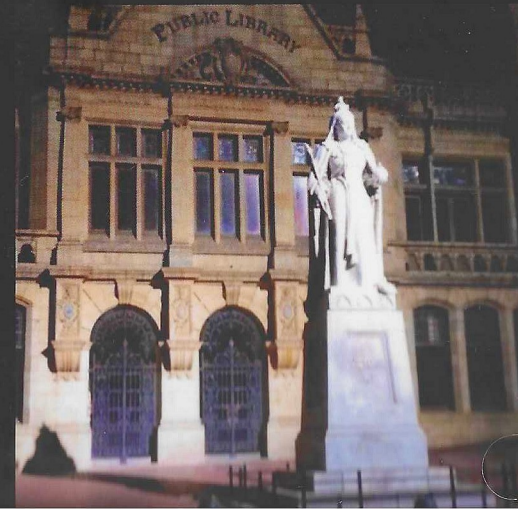
Volume 4: Second Wind

The first six decades of the 20th century



By the mid-20th century, Port Elizabeth comprehensively dominated the motor vehicle industry. Not only were 80% of South Africa's vehicles assembled in P.E. but they also predominated in the production of components as well. By the mid-century, the pendulum reversed direction as the magnetism of the Witwatersrand became overbearing and ultimately ineluctable.

This is the story of the people and the events that forms the basis of this incredible journey.



This book forms part of a four-volume series which takes the reader on the fascinating odyssey from the original inhabitants – the Khoi – through the town's development into an entrepôt, wool processor and exporter to its pinnacle as the Detroit of South Africa.

